

Warner Ranch IV

PREPARED FOR: UDC HOMES, L.P.
PREPARED BY: DESIGN PLUS WEST



DATE: APRIL 13, 1992
REVISED: MAY 18, 1992
REVISED: JULY 14, 1992

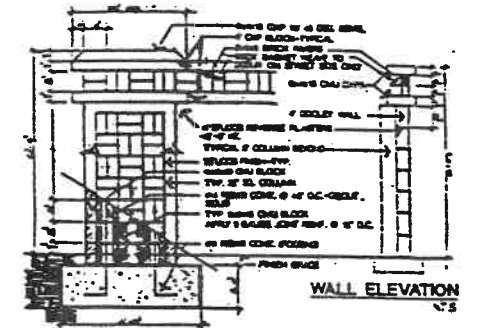
THIS PLAN REMAINS THE SOLE PROPERTY OF DESIGN PLUS WEST AND SHALL NOT BE USED FOR ANY PURPOSES UNLESS SO AUTHORIZED.



VICINITY MAP
NTS



ENTRY WALL and SIGNAGE DETAIL
NTS



WALL ELEVATION
NTS

TYPICAL AFRICAN SUMAC GROUPING
TYPICAL SHRUB GROUPING:
GREEN CLOUD TEXAS SAGE,
RED BIRD OF PARADISE,
RED YUCCA, YELLOW
LANTANA

4' HT. MASONRY WALL
TYPICAL WILLOW ACACIA GROUPING
TYPICAL SHRUB GROUPING:
THEVETIA, PETITE SALMON CLEANDER,
YELLOW LANTANA
TYPICAL WILLOW ACACIA GROUPING
2' DECOMPOSED GRANITE-TYP.

4' HT. MASONRY WALL
TYPICAL CHILEAN MESQUITE GROUPING
2' DECOMPOSED GRANITE-TYP.

TYPICAL SHRUB GROUPING:
PETITE SALMON CLEANDER,
MYOPORUM, YELLOW
LANTANA, GREEN CLOUD
TEXAS SAGE

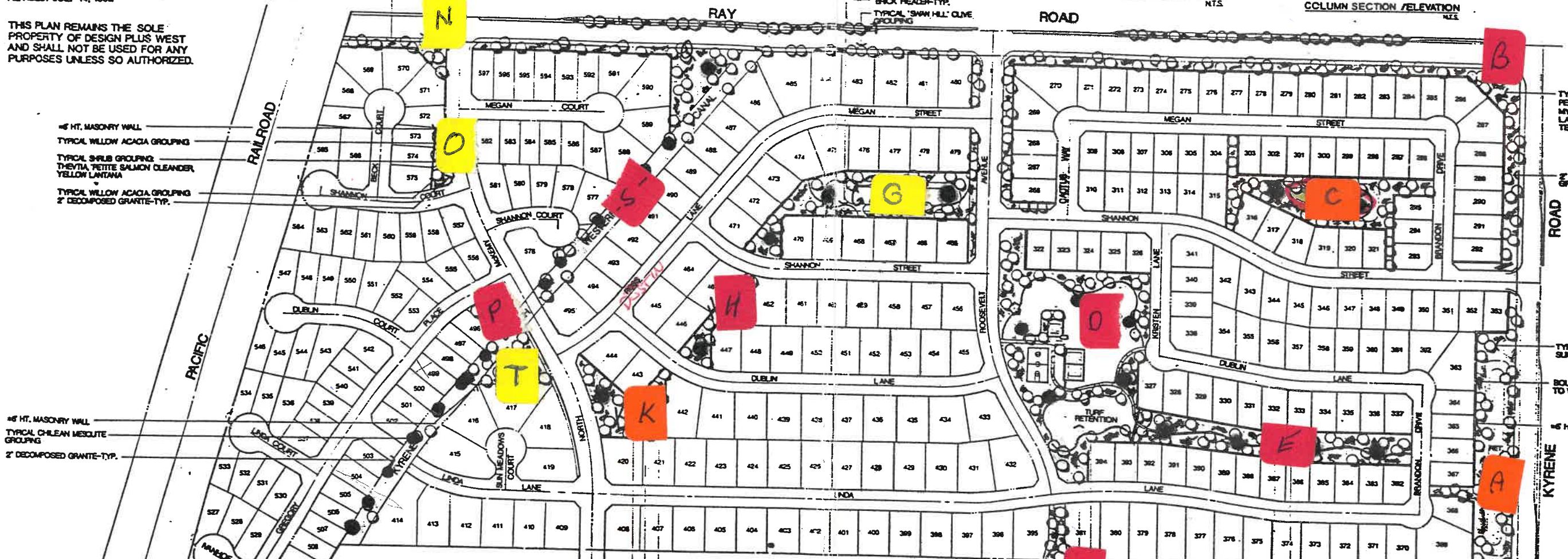
2' DECOMPOSED GRANITE-TYP.

TYPICAL AFRICAN SUMAC GROUPING

BOUGAINVILLEA STAKED TO WALL

4' HT. MASONRY WALL

KYRENE ROAD



HEARTHSTONE WEST
TYPICAL CHILEAN MESQUITE GROUPING
TYPICAL SHRUB GROUPING:
SILVERY CASSIA, GREEN CLOUD TEXAS SAGE, RED YUCCA, RED BIRD OF PARADISE
2' DECOMPOSED GRANITE-TYP.

PARK AREA
• 1/2 RAMADA WITH DRINKING FOUNTAIN
• TOT LOT
• VOLLEYBALL COURT
• BASKETBALL COURT
BRICK HEADER-TYP.

TYPICAL SHRUB GROUPING:
TR. PURPLE LANTANA, BRITTLEBUSH,
RED BIRD OF PARADISE, THEVETIA,
4' SIDEWALK

PLANT LIST (50% OF ALL TREES TO BE 24" BOX AND 50% TO BE 15 GAL.)

SYMBOL	PLANT NAME	SIZE
TREES:		
○	WILLOW ACACIA	15 GAL.
○	AFRICAN SUMAC	24" BOX
○	CHILEAN MESQUITE	15 GAL./24" BOX
○	'SWAN HILL' OLIVE	24" BOX
SHRUBS and GROUND COVER		
○	TEXAS MT. LAUREL	5 GAL.
○	GR. CLOUD TEXAS SAGE	5 GAL.
○	BOUGAINVILLEA 'B. KARST'	5 GAL.
○	R. BIRD OF PARADISE	3 GAL.
○	MYOPORUM	1 GAL.
○	SILVERY CASSIA	3 GAL.
○	PETITE SALMON CLEANDER	5 GAL.
○	RED YUCCA	1 GAL.
○	BRITTLEBUSH	5 GAL.
○	YELLOW LANTANA	1 GAL.
○	TRAILING PURPLE LANTANA	1 GAL.

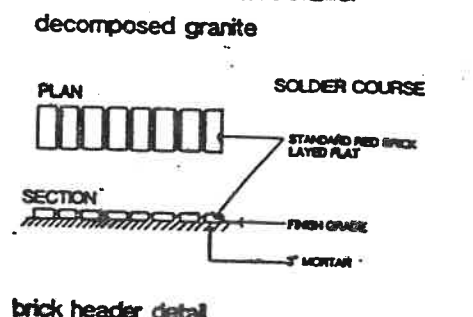
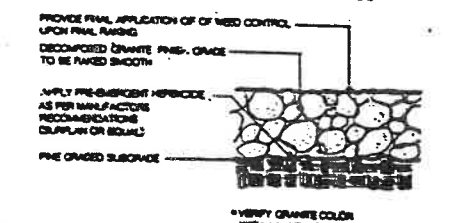
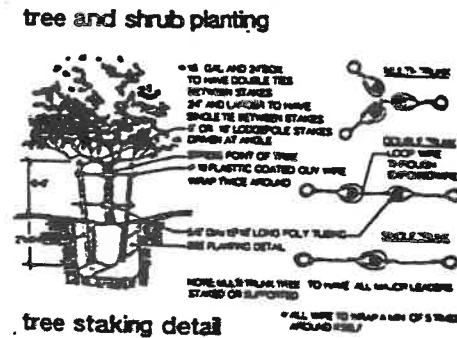
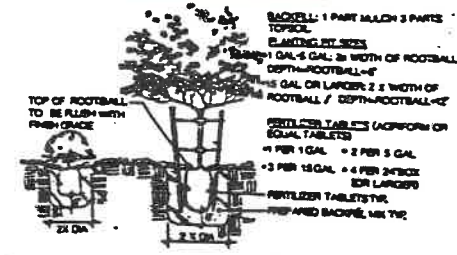
NOTE: 40% 5 gal. SHRUBS
60% 1 gal. SHRUBS

A THOROUGH ATTEMPT HAS BEEN MADE TO SHOW THE LOCATIONS OF ALL UNDERGROUND OBSTRUCTIONS AND UTILITY LINES IN THE MOBILE AREA. HOWEVER, THE CONTRACTOR SHALL BE RESPONSIBLE FOR ANY DAMAGES TO OBSTRUCTIONS AND UTILITY LINES ENCOUNTERED DURING CONSTRUCTION AND SHALL DETERMINE THE EXACT LOCATION OF UTILITIES IN ADVANCE OF TRENCHING.

NOTE
IRRIGATION SYSTEM TO CONSIST OF LAWN SPRAY HEADS AND DRIP EMITTERS CONNECTED TO AUTOMATIC VALVES AND TIED INTO A CENTRAL AUTOMATIC CONTROLLER.

NOTE
30% OF LANDSCAPE AREAS PROPOSED FOR GRANITE ARE TO BE PLANTED IN VEGETATIVE GROUND COVER. DETAILS TO BE APPROVED BY STAFF IN FINAL LANDSCAPE PLANS.

AMOUNT OF LANDSCAPING ON PROJECT
LANDSCAPING ON-SITE - 585,000 S.F.
LANDSCAPING IN PUBLIC RIGHT-OF-WAY - 58,425 S.F.
TOTAL LANDSCAPING - 643,425 S.F.



PRELIMINARY LANDSCAPE PLAN