
Warner Ranch 4

Home Owners Association

[Home](#)

[About Us](#) ▾

[HOA Documents](#) ▾

[FAQ](#)

[Meetings Schedule](#) ▾

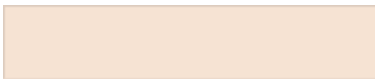
[Pay Your HOA Assesment](#)

APPROVED PAINT COLORS

WARNER RANCH PHASE 4 HOA

EXTERIOR PAINT LIST

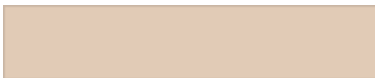
ORIGINAL COLOR CHOICES



Breakfast Biscuit, ~~1/2 Formula Garden Lakes Beige~~ (Dunn Edwards)



English Scone, ~~Garden Lakes Beige~~ (DE6108 Dunn Edwards)



DE6115 Practical Tan, ~~Sombbrero~~ (Dunn Edwards)

ADDITIONAL COLOR OPTIONS



Coconut Milk (2007-10c Valspar, Lowe's)



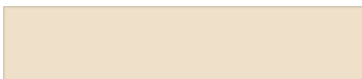
Ultra Suede (Unknown)



Oyster (DEC748 Dunn Edwards)



Pueblo (SW 771 Sherman-Williams)



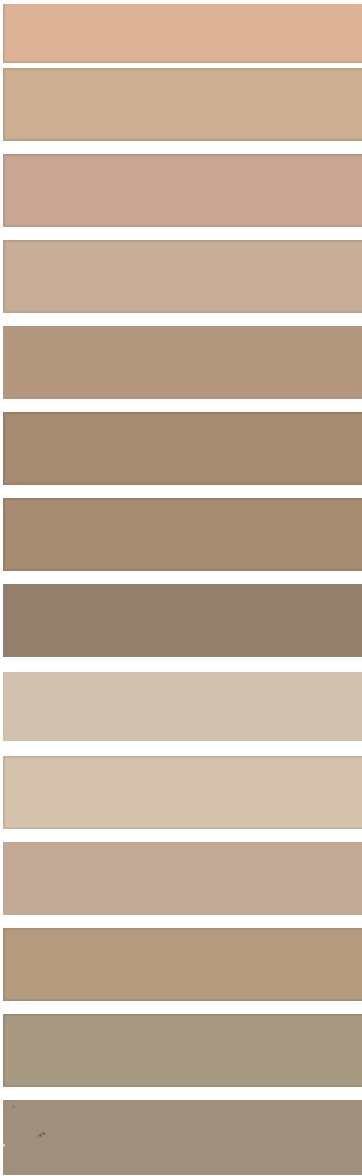
Winter Lite (Dunn Edwards)



Adobe South (DEC709 Dunn Edwards)



Sunset Cove (DEC708 Dunn Edwards)



Dover Plains (Dunn Edwards)

Moenkopi Tan (DEC704 Dunn Edwards)

Sandal (DEC715 Dunn Edwards)

Changing Seasons – Hotel St. Francis Fawn (3001-9C Valspar, Lowe's)

Mesa Tan (DEC718 Dunn Edwards)

Baked Potato (DEC717 Dunn Edwards)

Caramelized Onion (2008-9B Valspar, Lowe's)

Hopsack (3003-10B Valspar, Lowe's)

Sahara (Dunn Edwards)

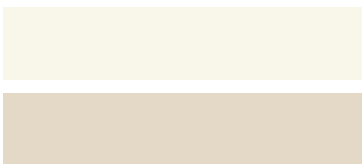
Boulder Beige (3001-10A Valspar ,Lowe's)

Wooded Acre (Dunn Edwards)

Wooden Peg (Dunn Edwards)

Oyster Shell Semi-Gloss (014-4 OlympiOlympi)

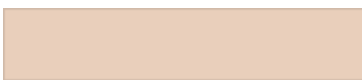
Trim and Pop-out Option



Swiss Coffee (DEW341 Dunn Edwards)

Savoury Beige (3002-10C Valspar, Lowes)

Wall Color



DE6108 English Scone (Dunn Edwards)